

Zephyr® Lite

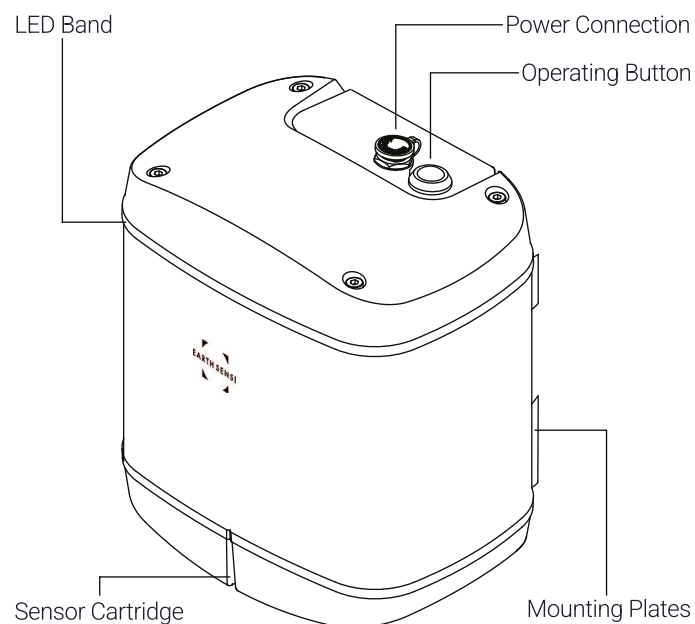
Quick Set-up Guide

Welcome to your Zephyr® Lite Air Quality Sensor.

Follow these simple steps to get set up and start taking measurements in no time.

What's in the box:

- Zephyr® Lite Air Quality Monitor
- 2 x Jubilee Clips
- 1 x Power Supply (Indoor use only)



Note: Please review our [Terms and Conditions](#) before using Zephyr Lite for the first time, as failure to comply may affect your warranty coverage.

1. Record your Serial Number

You'll find the serial number etched on the back of the device, it begins with "Z"— you'll need it later for setup.

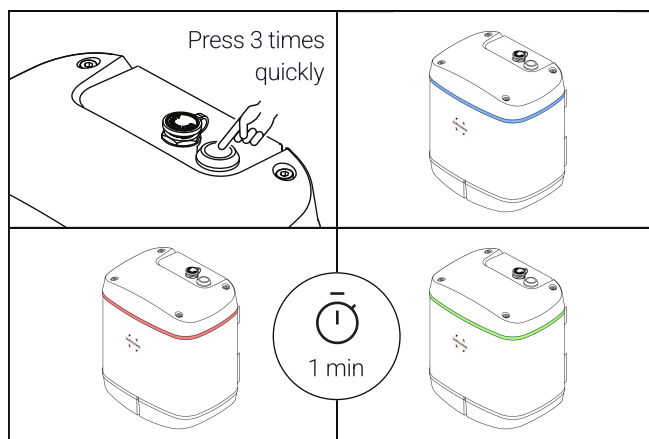
2. Establish Power

Plug the power cable into the port on the top of the Zephyr, then connect the other end to a suitable continuous power source.

3. Establish a Connection

Press and release the operating button three times quickly.

- The LED band will flash **blue** with each press.
- If successful, the LED band will turn solid **red**.
- Once a connection is established, the LED band will flash **green** once (this may take up to 1 minute).



If you don't see the green flash, repeat the steps.

Still having trouble? Contact us at support@earthsense.co.uk.

7. The LED Band

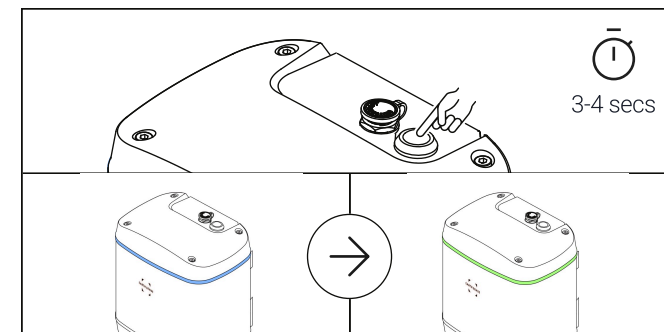
The LED Band on the Zephyr Lite provides a real-time visual indication of current air quality, based on the most recent measurements.

The indicator is updated every 5 minutes, based on a 5-minute average of sensor data.

To turn off the LED, simply contact us at and we'll disable it remotely.

4. Start sampling

Press and hold the operating button 3-4 seconds until the LED band changes from solid **blue** to **green**, indicating that sampling has started.



To stop sampling, simply press and hold the button again for 3-4 seconds. The LED band will turn **red**.

5. Update Location

Record the installation location (latitude and longitude coordinates with 6 decimal places e.g. 52.655774, -1.129784).

Then email the location details along with your Zephyr serial number to support@earthsense.co.uk.

6. Check your Air Quality

To view your air quality insights, log in at www.portal.earthsense.co.uk using the instructions provided in your welcome email.

We recommend logging in as soon as possible to confirm your device is correctly set up and transmitting data.

Air Quality Colourbands

Good	Poor
Fair	Very Poor
Moderate	Extremely Poor