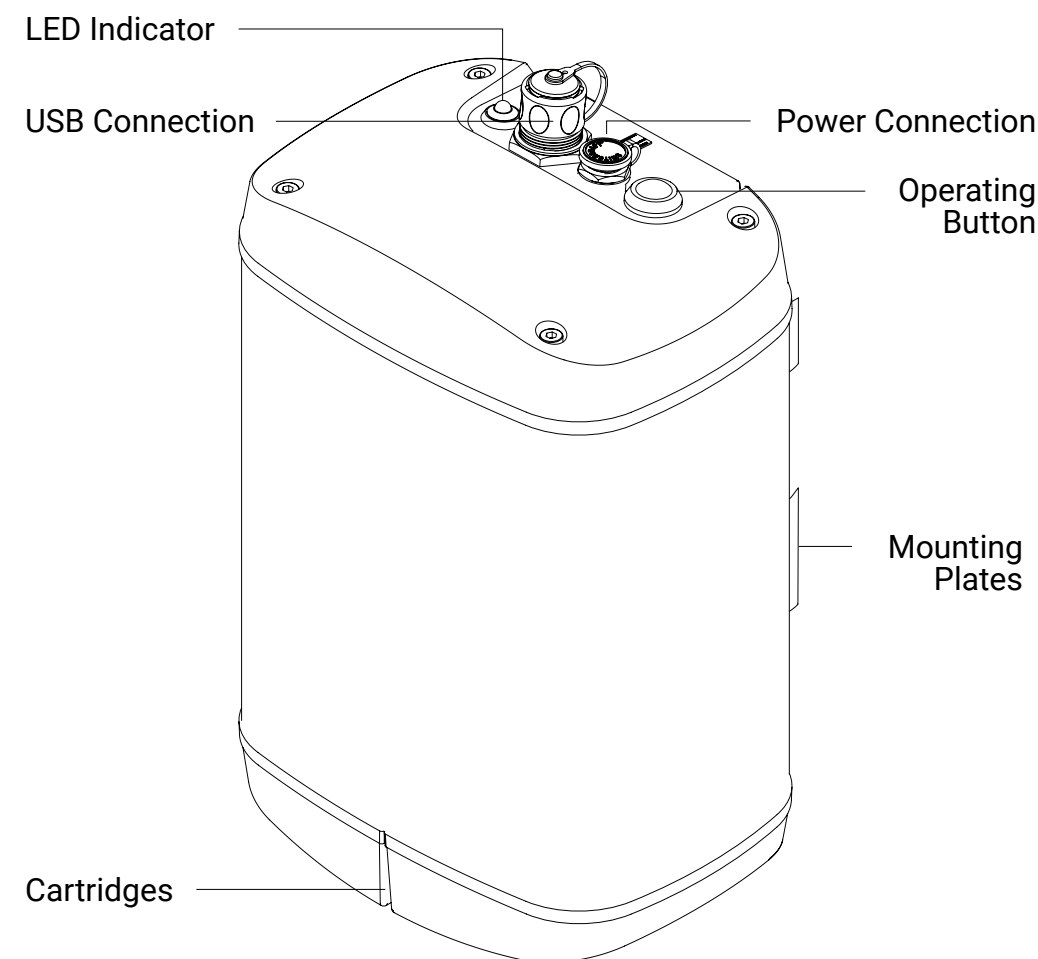


Zephyr® Quick Set-up Guide

Welcome to your Zephyr® air quality sensor! Follow these simple steps to get you set up and taking measurements.

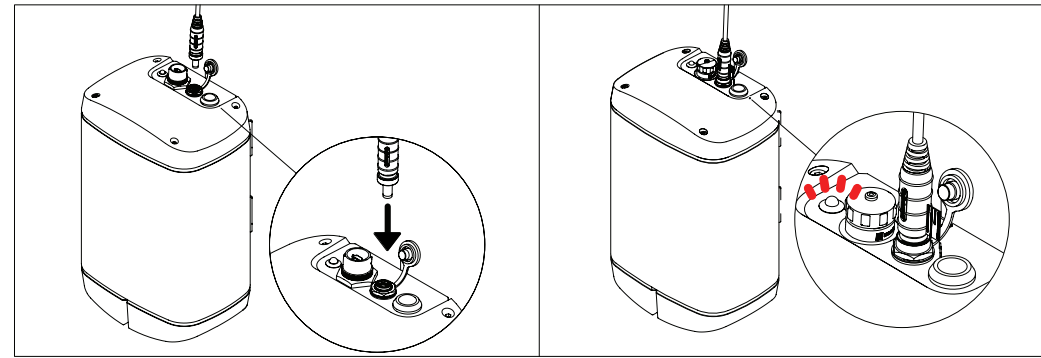
What's included in the box:

- 1x Zephyr® air quality sensor
- 2x Jubilee clips
- 1x power supply [internal use only]
- QR code to online resources



NOTE: Please review section 1.6. in the [EarthSense Terms and Conditions](#) before set up and installation as certain actions may void your Zephyr® & solar panel warranty.

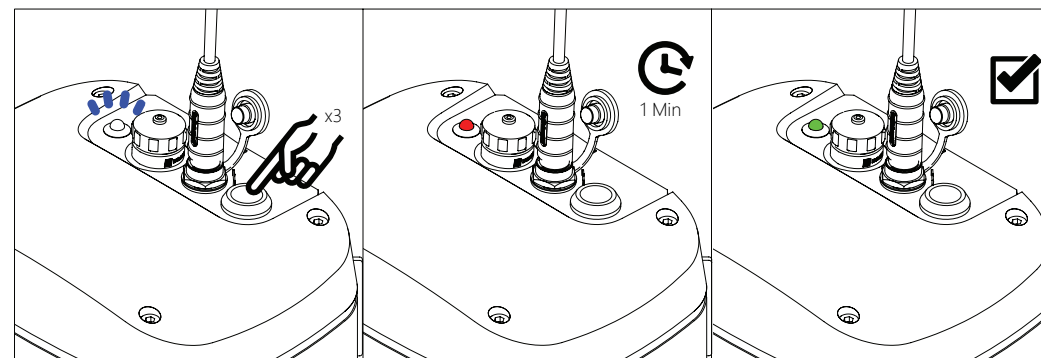
1 | Charge the Zephyr®



Lift the cap of the power connection and insert the power cable. Plug into a socket and charge the Zephyr®. The LED will flash red to indicate it is being externally powered.

NOTE: ensure the cap is always closed after charging to prevent water damage when deployed outdoors.

2 | Establish a GSM connection

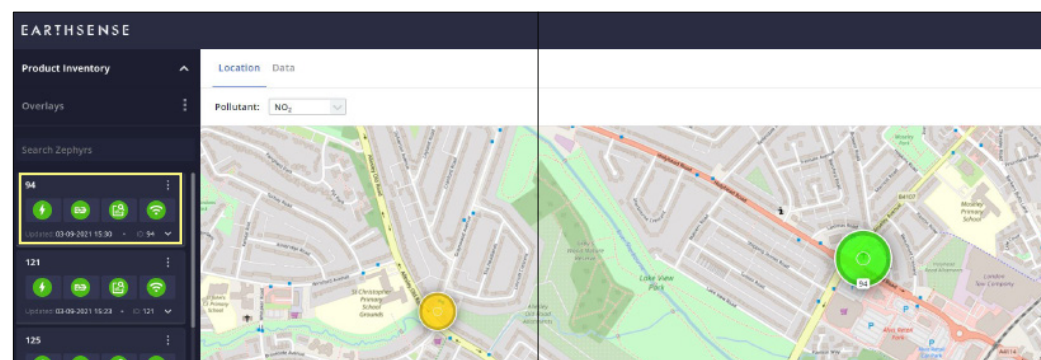


GSM is the communication method between the Zephyr® and MyAir®. Ensure this step is carried out in a location with known good GSM availability (usually somewhere your mobile phone has signal).

Press the operating button 3 times, one immediately after the other. The LED will flash blue for each confirmed button press.

The LED will then flash blue before turning to solid red. The GSM connection is successful when the LED gives one green flash. This can take up to 1 minute so ensure you keep an eye on the LED for the one green flash.

3 | Login to MyAir® to check battery & connection

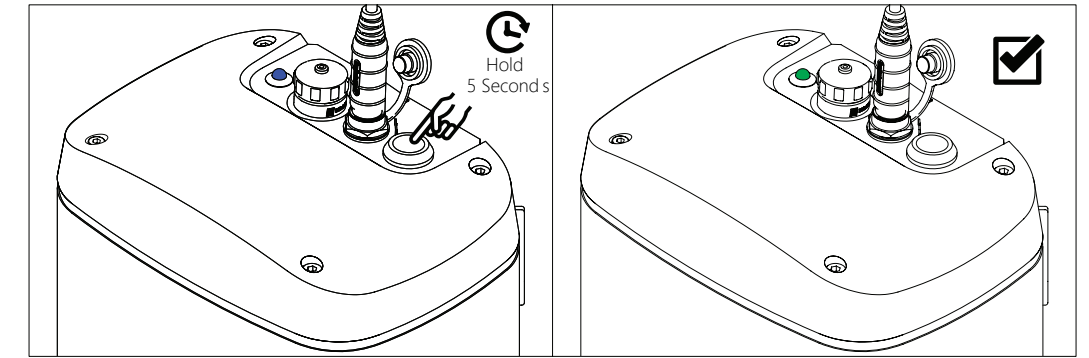


Head to www.portal.earthsense.co.uk. You will have received an email from us with your MyAir® login details. Log in to view your Zephyr® status, locations, download data and more.

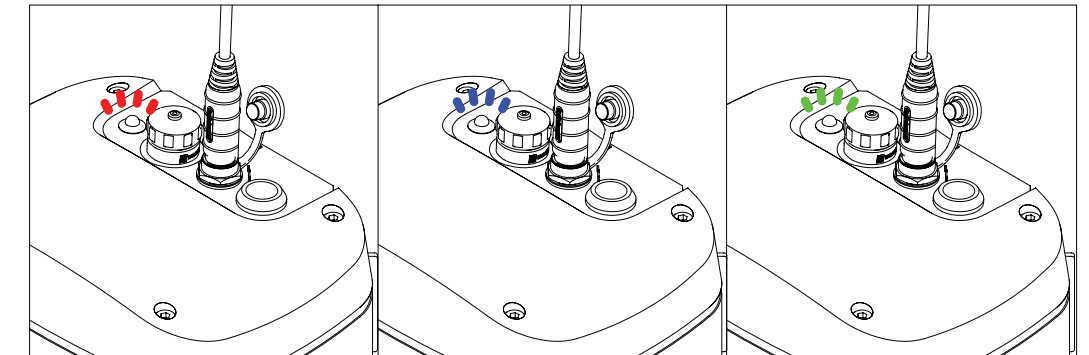
Navigate to the left hand side of the interface to the 'Product Inventory' and click 'Overlays'. Check 'Zephyr' and you will see your Zephyr(s) listed with icons to indicate the status. Icons will indicate when the Zephyr® is fully powered and whether the connection has been successful.

NOTE: Check the number on the back of the Zephyr® to ensure the correct Zephyr(s) is shown and connected. If your connection has been unsuccessful, contact us at support@earthsense.co.uk

4 | Start taking measurements



Press and hold the operating button for 5 seconds. The LED will turn from solid blue to green to indicate that the Zephyr® is on and ready to use.



The LED will flash between red, blue and green.

Red = Zephyr® is powered
Blue & Green = Zephyr® is taking measurements

Your Zephyr® is now taking measurements and ready to be installed!

5 | Optional - Deploy Zephyr® on a vertical post

If you wish to deploy your Zephyr® on a vertical post, head to: <https://www.earthsense.co.uk/product-resources> and download the installation guide.

To stop taking measurements & turn the Zephyr® back to idle mode

Press and hold the operating button for 5 seconds - the LED will turn solid blue. Release the button when the LED turns red. A confirmation red flash will then occur.